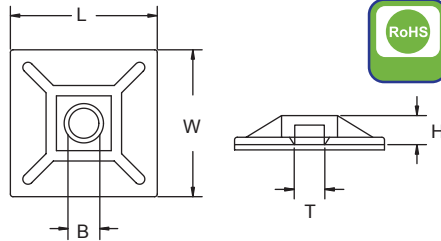
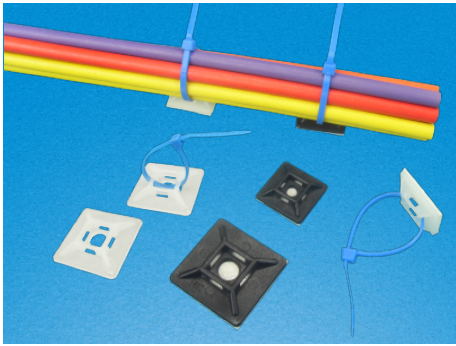


RCCN 日成HC型粘式扎线固定座 Self Adhesive Backed Mounts

单位/Unit:mm



型号 Item No		长度 Length L	宽度 Width W	高度 Height H	螺丝孔 Screw holes B	扎线带穿孔 Cable tie with hole T	包装 Packing
本色/Natural	黑色/Black						
HC-100	-	12.5	12.5	3.2	3.2	3.2	100pcs 或/or 500pcs
HC-101	HC-101B	19.5	19.5	4.2	3.8	4.5	
HC-102	HC-102B	29	29	5.3	6.8	6.0	
HC-101/3M	HC-101B/3M	19.5	19.5	4.2	3.8	4.5	
HC-102/3M	HC-102B/3M	29	29	5.3	6.8	6.0	

材质：UL合格之NYLON 66(本色),防火等级94V-2。

用法：使用时将底面胶带撕去封纸,再将固定贴于铁板之上,复以扎线带于孔中,即可使用,可省去面板钻孔之麻烦。

备注：背胶采用进口双面胶,粘性牢,3M为超挂重胶,适合环境要求较高。

●Material: UL approved Nylon 66, 94V-2

●Color: Natural, available in other colors.

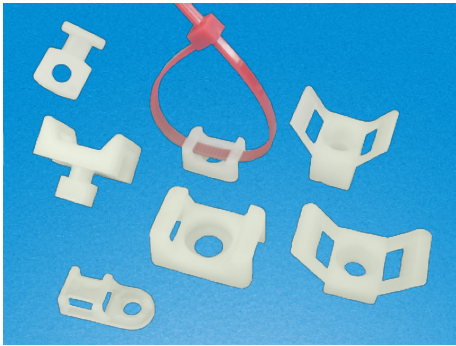
●SELF-ADHESIVE TIE MOUNTS is designed to support light weight wire bundles when properly applied on any clean, smooth, grease-free surface. For heavy support, mounting hole is provided for screws.

●To apply, simply peel off backing paper and apply mount to surface. After that, cable ties can be inserted to secure wire bundles.

本系列阻燃V0型号,例:HC-102V0, HC-102BV0

RCCN 日成HC型锁式扎线固定座 Saddle Tie Mounts

单位/Unit:mm



* 为大量现货品。
With big stock items

另备阻燃型号,本色:HC-2V0,黑色HC-2BV0

型号 Item No		长度 Length L	宽度 Width W	高度 Height H	螺丝孔 Screw holes B	扎线带穿孔 Cable tie with hole T	包装 Packing
本色/Natural	黑色/Black						
* HC-0	HC-0B	19.6	9.5	5	4.5	5.8	100pcs 或/or 500pcs
* HC-1	HC-1B	15.0	10.0	7.0	3.3	5.1	
* HC-1L	HC-1LB	15.0	10	7.0	4.5	5.1	
HC-2S	HC-2SB	23	16	9.8	4.5	9.0	
HC-2A	HC-2AB	23	16	9.8	6.1	9.0	
* HC-2	HC-2B	23	16	9.8	5.3	9.0	
HC-2L	HC-2LB	23	16	9.8	6.5	9.0	
HC-3	HC-3B	23	13.8	17.5	9.5	5.3	
HC-4	HC-4B	30	14.7	11.6	9.5	5.0	
HC-5	HC-5B	21.5	16.0	10.0	7.8	5.8*9.7	
HM-0	HM-0B	10.2	8.1	2.5	3.5	2.8	
HM-1	HM-1B	18.9	12.7	3.0	4.4	5.0	

材质：UL合格之NYLON 66(本色)。

防火等级:94V-2。

用途：先将固定座以螺丝固定如右图再以扎线带绕绑电缆。

另备黑色型号:HC-0B,HC-1B,HC-1LB,HC-2B

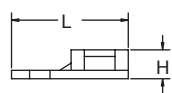
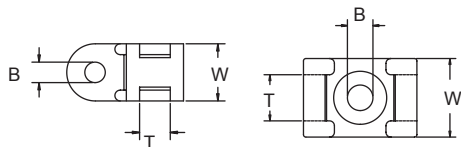
HM型适用空间较小使用。

Material : UL approved NYLON 66(natural) ,

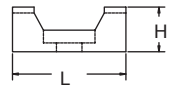
fireproof : 94V-2

Part no. of black:HC-0B,HC-1B,HC-1LB,HC-2B

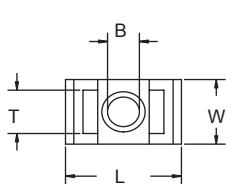
本系列阻燃V0型号,例:HC-2V0, HC-2BV0



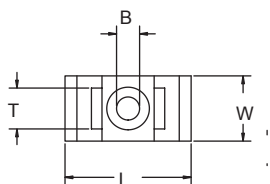
HC-0



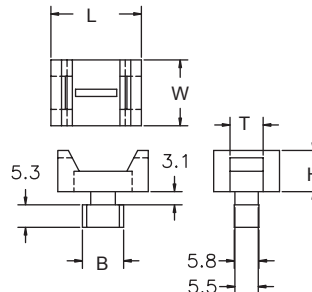
HC-1,2



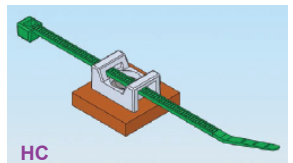
HC-3



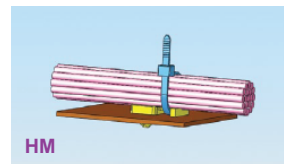
HC-4



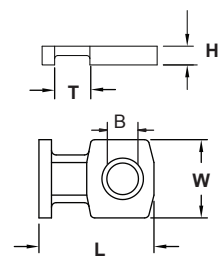
HC-5



HC



HM



HM